



Valve control box VC-6

Automated gas flow
handling through six
samples simultaneously



To make full use of the capabilities of our gas detectors, Sensor Sense has developed a number of peripherals to make setting up experiments easy.

This valve control box is an indispensable tool for parallel measurements, fully automated and computer controlled, with all the gas handling components *completely* integrated in the device.

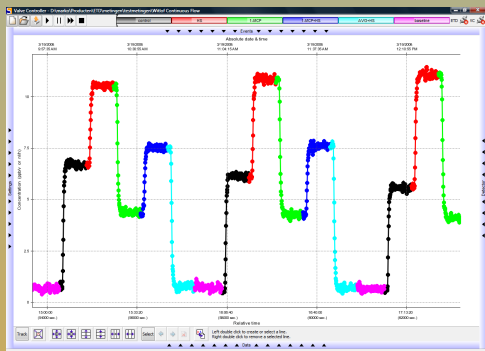
Options:

- **Continuous flow**
Independently controls the flow through up to six cuvettes and directs the flow of one channel to the detector. This keeps the flow conditions in the cuvettes constant throughout the experiments.
- **Stop and flow**
Accumulates the gas produced by a sample for a certain time before it is flushed through the detector. This facilitates measurements of extremely small gas concentrations (e.g. the combination of the VC-6 the ETD-300 can monitor production of ethylene as low as 40 *picoliters per hour*.) Up to 6 cuvettes can be controlled simultaneously: while one is being measured, the others are accumulating, hence optimizing measurement efficiency.
- **Sample mode**
This mode is very useful for applications that require multiple samples screening, typically hundreds. Ethylene emission needs to be quantified once for each sample, rather than monitoring over time.

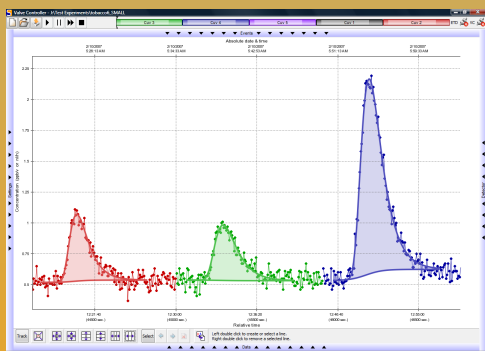
The valve control box is supplied with user friendly software, special designed to *display* and *process* the data provided by our ETD or other detectors in *real-time* .

No additional software needed: data ready to publish!

Datasheet VC-6



Continuous flow



Stop and flow

Technical Data

Gases	Calibrated for air, N ₂ , other gases on request
Flow	0.25-5 l/h
Accuracy	0.2% FS
Number of flow channels	6
Modes	Continuous flow, stop and flow
Flow Controller Response Time (T_{1/e})	300 ms
Gas supply overpressure	0.5-4 bar
Over pressure valve	Opens at 5 bar
Gas filter	Filters particles >7µm
Dimensions	40x50x10cm (LxWxH) (19" rack configuration, 2U)
Operating temperature	5-40 °C
Humidity	0-95 % (non-condensing)
Power input	90-264 VAC, 47-63 Hz
Power Consumption	<60 W
Gas input/output	Quick fitting connectors for 1/8" OD tubing

Interface

Output	USB
Control	- Sensor Sense Valvecontroller software Compatible with MS Windows XP or higher Min. 1 GHz, 512 MB RAM - .DLL for integration in other software - The valves can also be manually controlled
Data output	.CSV, compatible with MS Excel, OOo Calc, Microcal Origin etc.
Display	LED indicators

This valve controller box is designed for use in combination with the Sensor Sense Ethylene Detector (ETD-300). The device can be adapted to a stand-alone device on request.

Several types of cuvettes for experiments, as well as scrubbers and catalyzers to provide hydrocarbon-free air are also available.